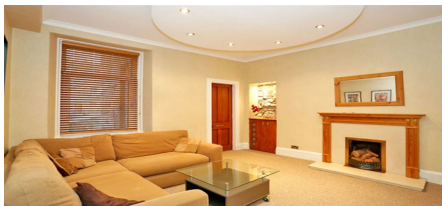


# Roslin Street, Aberdeen, AB24 5PE

## 2 bedroom Flat



Tastefully decorated 2 double bedroom first floor flat within easy walking distance Aberdeen city.

- Kitchen with appliances
- Family shower room
- GCH/DG
- Available May 2018
- 2 double bedrooms with carpet
- Shared rear garden/Drying green
- On street parking
- 106638/100/09030

£650 PCM

