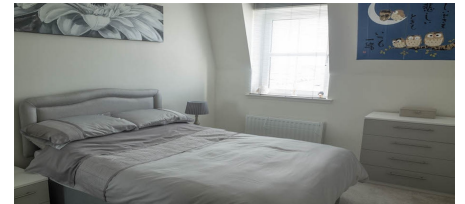


# Charleston Road North, Aberdeen, AB12 3SZ

## 1 bedroom Flat



This newly built top floor apartment is set in the Cove area on the south-east edge of Aberdeen. It is a popular residential area given its village-like status and its close proximity to Altens and Tullos Industrial Estates as well as the A90 and within minutes drive to the City Centre. This area also has easy access to shops/cafes and leisure facilities, these include Local, IKEA, Makro and Pure Gym.

- Open plan kitchen, lounge
- GCH / DG
- Large double master bedrooms with built-in wardrobes
- CTB : C
- Modern three-piece bathroom suite with a shower over the bath
- Allocated parking
- Available mid August
- Communal lift, sensor lighting and security entrance door system

464500/100/18391

£650 PCM